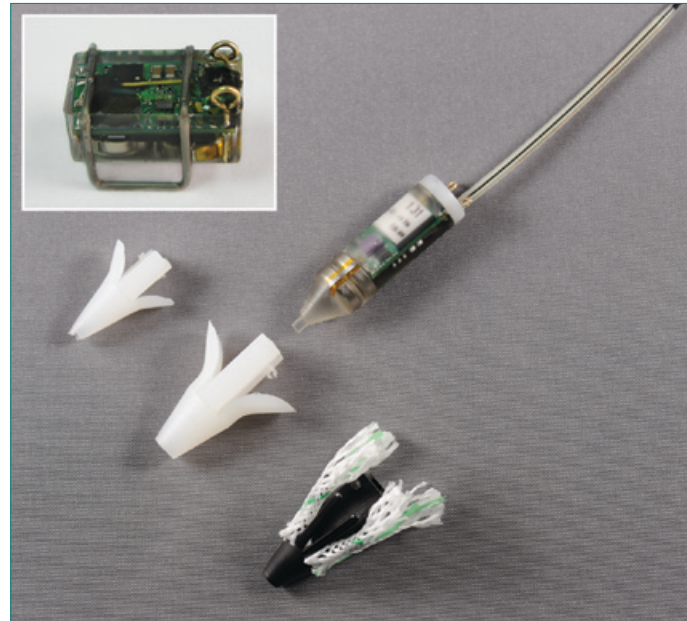


LAT 2900 Series (Nano LAT)

Light-based geolocating archival tags

Gain valuable insights into the life cycle of your species.

Lotek Archival Tags are compact, reliable instruments for the collection and storage of precision-time-stamped depth, temperature and light-based geolocation data.



Key Features

- At 7.8mm x 26mm, the nano LAT is the smallest geolocation tag available for fish or avian applications.
- Communications with the tags are highly reliable and fast (<2sec to connect) - now made through physical contacts.
- Enhanced biocompatibility from an inert coating.
- Sea water switch feature - can identify when the tag is immersed in water.
- Tag design and components selection to ensure a one year life.
- Data ranges are configured by specifying the min. and max. limits for each sensor. Data resolution can be determined by the number of bits (up to 12) for temperature sensors in some logs. This optimizes the memory usage per sensor; selecting a lower resolution and/or narrow data range will increase the number of samples collected.
- User programmable delayed logging start.
- Three memory management (log type) options:
 1. Day Log: summarizes on board geolocation and other processes, allowing one to collect data for every day at liberty; a number of "loggables" are available to be recorded in the Day Log, e.g., daily: sea surface temperature, sensor min. and max values, wet/dry activity, times of sunrise and sunset, etc.;
 2. Conditional Log: samples recorded (or not) based upon the condition of one or two sampled "loggables"; eg., logging dives below a specific depth, logging only when wet, logging only within a specific period during the day.
 3. Regular Log: straight sampling. The user can configure multiple and delayed regular logs.

LOTEK
WIRELESS
FISH & WILDLIFE MONITORING

Innovative solutions for a sustainable future.

- Receivers
- Dataloggers
- Radio transmitters

- Acoustic transmitters
- Archival tags
- GPS systems

- Hydrophones
- Wireless hydrophones
- Physiological transmitters

- Depth transmitters
- Accessories
- Consulting

LAT 2900 Series: Geolocation

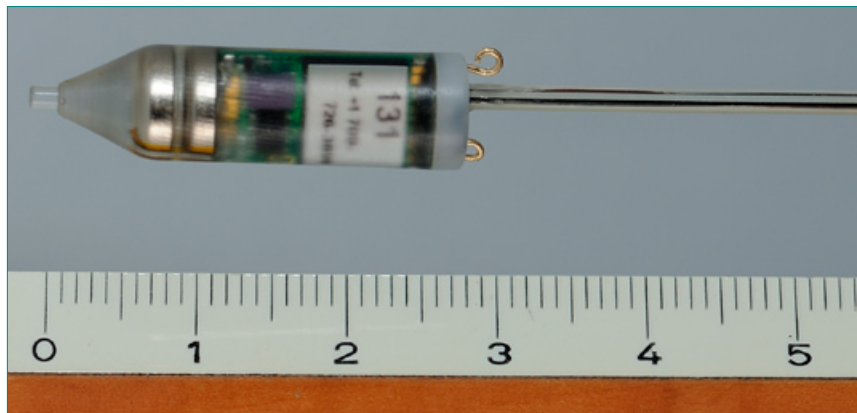
Specifications

	LAT 2910 (Internal Mounting)	LAT 2900 (External mounting (flatpack))
Dimensions	7.8mm X 26mm	8mm X 20mm x 6.7mm
Weight in air	2.5g (with external sensor stalk)	1.9g
Memory	32 kbytes	
Memory Management	Custom Programming	
Survival Depth	1.5 x pressure sensor	
Number of samples	Variable based upon data storage options selected	
Sample rate setting	≥1s in 1 sec. increments	
Data Download	Gold electrical contacts, 57.6 kbaud	
Standard Depth Range	50m, 100m, 200m, 500m, 1000m, 2000m	
Data Resolution	Up to 12 bits	Up to 12 bits
Processing scale and offset	Yes	
Sensors	Internal Temperature, Pressure, Light, Sea Water Switch	Internal & External Temperature, Pressure, Light, Sea Water Switch
External sensor stalk	Yes	No
Pressure Accuracy	+/-1%	
Pressure Resolution	0.05%	
Temperature Measurement	-5° to 45° C	
Temperature Accuracy	Better than 0.2° C (when within -5° to 35° C)	
Temperature Resolution	0.05° C or better	
User Setup	Miscellaneous ways to log data (see Key Features)	
Number of log structures allowed	3	
Minimum Life	6 months*	
Typical Life	TBD	
Data Analysis Software	Available	

NOTE: These specifications are subject to change.

* at the sampling interval of every 12 seconds.

For minimum life expectancy associated with sampling intervals less than this, please contact the appropriate Lotek account manager.



LOTEK
WIRELESS

FISH & WILDLIFE MONITORING

Innovative solutions for a sustainable future.

Tel: 905-836-6680
Fax: 905-836-6455

Web: www.lotek.com
Email: biotelemetry@lotek.com

L2109 - 001